



## Aeon Battery

A48-40

Take charge of your energy. Zenaji's Aeon Battery provides an economically viable lifetime solution for your home energy storage.

*Cutting edge battery delivering market-leading technology and economic savings*

The Aeon Battery offers the most **robust, safest, longest life** and most **cost effective** solution available today. With a **no frills** design, the Aeon Battery is **easy** to install and can be **expanded** in the future to provide you with peace of mind in your storage **investment**.

### Lifetime Solution

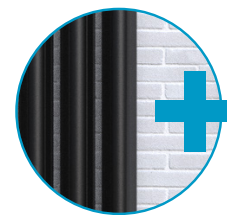
The Aeon battery lasts for 22,000 cycles, and has a tough weatherproof aluminium case providing a lifetime energy storage solution.

### Superior Performance

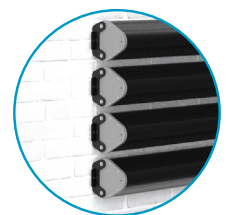
Each Aeon Battery provides 1.93kWh of energy storage. Superior cycling performance allows 3 cycles a day to take full advantage of your energy production and off peak energy pricing plan.

### Smart Design

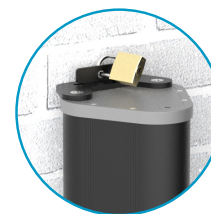
Simple inside or outside installation, easily mounted on a wall, with a space efficient design and modern aesthetics (comes with mounting brackets)



Easy system Expansion



Horizontal mount



Simple lock security



Vertical mount



Specification	A48-40	
Nominal Capacity (25°C ± 5°C) (Useable Capacity)	1.93KWh (40Ah)	
Chemistry	Lithium Titanate (LTO)	
Dimensions (Height x Width x Depth)	1635 x 155 x 145 mm	
Nominal Voltage	48.0V	
Bulk Stage Voltage / Current*	53.8V / 20A	If only one Bulk/Absorption stage available, use Absorption settings
Absorption Stage Voltage / Current*	56.5V / 5A	
Float Voltage*	52.2V	<b>round down</b> to closest number when inverter setting isn't as precise
High Cut-off Voltage	57.0V	
Discharge Cut-off Voltage (Low Cut-off Voltage)	42.0V	
Low Restart Voltage (Reconnect Voltage)*	45.6V	<b>round up</b> to closest number when inverter setting isn't as precise
Mass	36kg	
Rated DC Charge/Discharge Current (25°C ± 5°C)	50A (1.25C) continuous DC, 38A (0.95C) pulsed DC**	
Rated DC Charge/Discharge Power (25°C ± 5°C)	2415W continuous DC, 1835W pulsed DC**	
Max DC Charge/Discharge Current (10s, 25°C ± 5°C)	120A (3C)	
Max DC Charge/Discharge Power (10s, 25°C ± 5°C)	5796W	
Battery Management System	Internal cell balancing, failure detection and trip. Under-Voltage, Over-Voltage, Over-Current, Over-Temp, Under-Temp protection and trip	
Isolation & Distribution Block Requirement	50A per battery connected in parallel	
Battery Short Circuit Current	1700A	
Operating Temperature	-40°C to 60°C (recommended 5°C to 35°C)	
Storage Temperature	-5°C to 35°C	
Cycle Life (1C, 25°C ± 5°C)	22,000	
Depth of Discharge	100%	
Round Trip Efficiency (1C, 25°C ± 5°C)	96%	
Ingress Rating	IP65	
Installation	Indoors or outdoors	
Connections	6mm <sup>2</sup> (10 AWG) (Ø2.8mm) wire per pole	
Warranty	20 Years or 22,000 cycles, whichever comes first, see warranty document for details	

\*common two or three stage charge and discharge settings. For specific inverter settings, please contact Zenaji.

\*\*most inverters supply pulsed Direct Current, not continuous Direct Current

For information on compatible inverters, chargers and charge parameters please visit [www.zenaji.com](http://www.zenaji.com)

Zenaji Pty. Ltd. | 2 Shearson Cres, Mentone, 3194 | Australia

Australia: [ben@zenaji.com](mailto:ben@zenaji.com) | +61 448 818 857

International: [info@zenaji.com](mailto:info@zenaji.com) | +61 418 104 496

[www.zenaji.com](http://www.zenaji.com)

All product, service and technical data described subject to change without notice

A48-40 Spec Sheet | ZEN-012 | V4.5 | 30 AUG 2021

